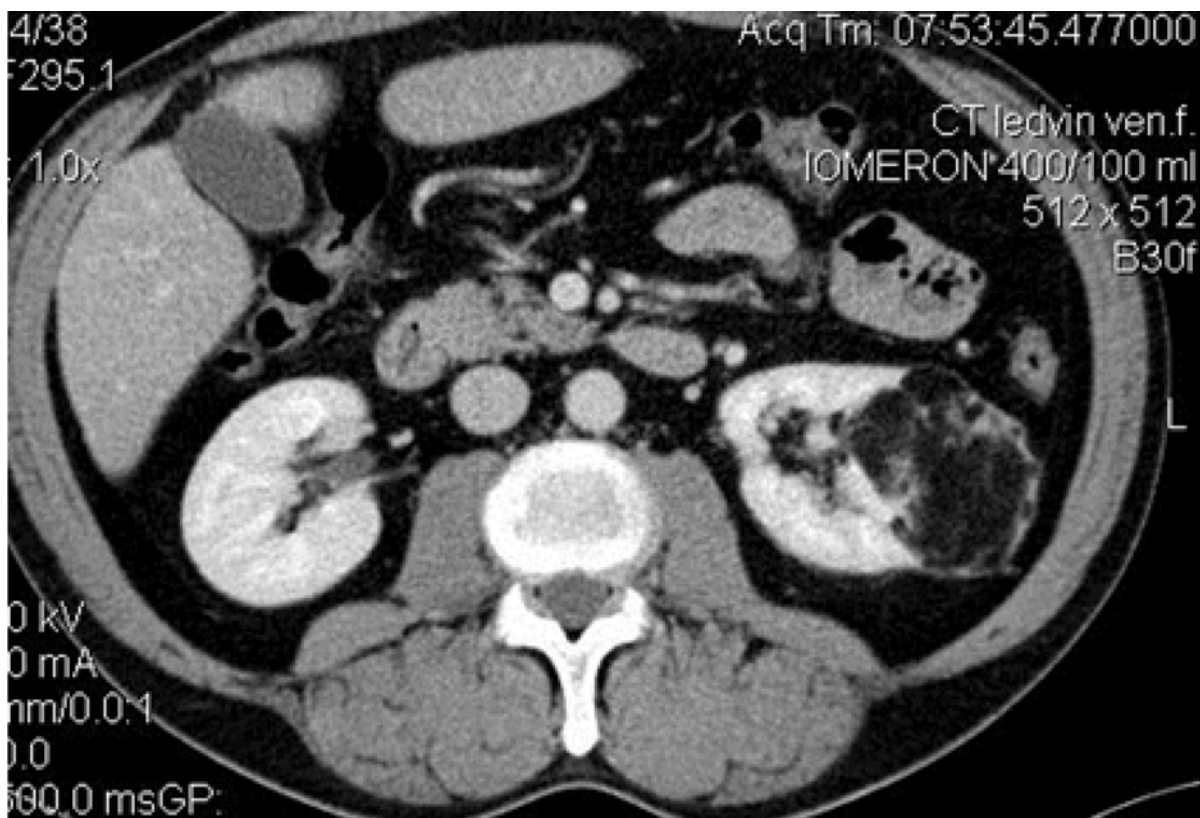


**Obr. 1.** Angiomyolipom levé ledviny CT (koronární řez)

**Fig 1.** Angiomyolipoma of the left kidney CT (transverse section)



**Obr. 2.** Angiomyolipom levé ledviny CT (transverzální řez)

**Fig 2.** Angiomyolipoma of the left kidney CT (transverse section)

greatest benefit of a robotic system is the possibility of a safe treatment of the resection bed. This fact gives the courage to relatively safely attempt to perform a minimally invasive procedure in a setting where classic open approach was indicated previously.

**Method:** A 55-year-old male patient with a finding of a large angiomyolipoma of the left kidney was referred to our centre for consultation. The size of the tumour was 68 x 55 x 78 mm with a centrally extending portion.